



MUD FLAPS PROVIDE CRUCIAL BENEFITS TO YOUR FLEET.

Mud flaps shield vehicles from road debris, including rocks and dirt, enhancing safety, and preventing potential damage to both your truck and other vehicles. They safeguard trailers and cargo, extending their lifespan by protecting against corrosion and rust. Additionally, they can improve the aesthetics of your truck, offer environmental benefits by preventing the spread of pollutants, reduce spray in wet conditions, and ultimately contribute to maintaining a higher resale value for your vehicle.



DID YOU KNOW?

There is a prevalent misconception that mud flaps are federally mandated, similar to rear-end protection. However, the regulations for mud flaps on commercial trucks are actually determined at the state level, and each state may have distinct requirements regarding their placement and height above the ground.

It's crucial to ensure that when equipping your fleet with mud flaps, you do so in strict accordance with the specific regulations of each state.



THE RIGHT PART AT THE RIGHT TIME.

Road Choice® has over 50 product lines to serve the heavy-duty trucking aftermarket marketplace with reliable parts for all makes and models of trucks. Road Choice parts carry a minimum one-year warranty, with some categories providing lifetime warranties for extended peace of mind. It's coverage that adds confidence for trucks of all ages, running all routes. We take pride in the quality of every part and product we sell.

Road Choice truck parts are conveniently available for purchase at more than 600 retail locations throughout North America or online through PartsASIST™, 365 days a year at your local parts counter or delivered directly to your doorstep.

VISIT [ROADCHOICE.COM](https://roadchoice.com) FOR MORE INFORMATION.

©2024 Road Choice® – All Rights Reserved.
RCOMF-24BRO



ROAD CHOICE MUD FLAPS



ROAD CHOICE MUD FLAPS

ONLY AVAILABLE IN THE UNITED STATES.

POLY MUD FLAPS

Made from the highest quality polymeric materials and elastomeric resins, poly mud flaps are alloyed to provide resistance to cracking and breaking under extreme conditions.



1/4" PROFILE

ROAD CHOICE PART NUMBER	DESCRIPTION	DIMENSIONS	LBS EACH
MF142424BP	Black poly, matte finish front/groove roll shallow back	24" x 24"	3.7 lbs.
MF142430BP		24" x 30"	4.6 lbs.
MF142436BP		24" x 36"	5.5 lbs.
MF142424WP	White poly, matte finish front/groove roll shallow back	24" x 24"	3.7 lbs.
MF142430WP		24" x 30"	4.6 lbs.
MF142436WP		24" x 36"	5.5 lbs.



3/8" PROFILE

ROAD CHOICE PART NUMBER	DESCRIPTION	DIMENSIONS	LBS EACH
MF382424BP	Black poly, matte finish front/anti-spray back	24" x 24"	5.0 lbs.
MF382430BP		24" x 30"	6.2 lbs.
MF382436BP		24" x 36"	7.5 lbs.
MF382424WP	White poly, matte finish front/anti-spray back	24" x 24"	5.0 lbs.
MF382430WP		24" x 30"	6.2 lbs.
MF382436WP		24" x 36"	7.5 lbs.



CHOICE FLEX MUD FLAPS

Choice Flex flaps are made from a unique hybrid of recycled, reclaimed rubber that provides the best combination of strength and flexibility.



.150 GAUGE PROFILE

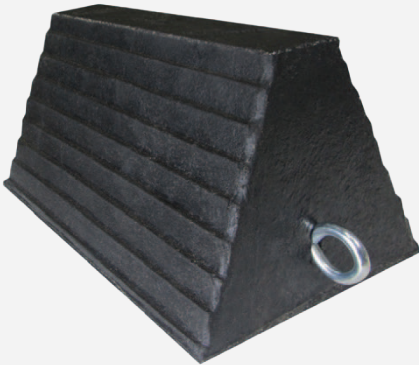
ROAD CHOICE PART NUMBER	DESCRIPTION	DIMENSIONS	LBS EACH
MFPRO2424R	Matte finish front/rough grip pattern back	24" x 24"	3.4 lbs.
MFPRO2430R		24" x 30"	4.2 lbs.
MFPRO2436R		24" x 36"	5.0 lbs.



SAFETY WHEEL CHOCK

Our chocks are made from rubber tire compounds reinforced with nylon and polyester fabric. Designed to resist abrasion, their elasticity and impact absorption provide excellent protection for vehicles.

ROAD CHOICE PART NUMBER	DESCRIPTION	DIMENSIONS
WC6810R	Safety chock with eye bolt hardware	6" x 8" x 10"



MOLDED RUBBER MUD FLAPS

CHEVRON 1/4" PROFILE

ROAD CHOICE PART NUMBER	DESCRIPTION	DIMENSIONS	LBS EACH
MF142424R	Black chevron mud flap with smooth back, no insert	24" x 24"	4.9 lbs.
MF142430R		24" x 30"	5.5 lbs.
MF142436R		24" x 36"	6.6 lbs.

HEAVY-DUTY 3/8" PROFILE

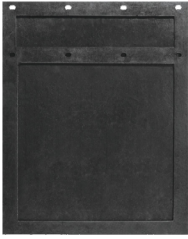
ROAD CHOICE PART NUMBER	DESCRIPTION	DIMENSIONS	LBS EACH
MF382424R	Heavy-duty rubber mud flap with a 20" x 20" insert and smooth back	24" x 24"	6.5 lbs.
MF382430R		24" x 30"	8.0 lbs.
MF382436R		24" x 36"	9.5 lbs.

HEAVY-DUTY 1/2" PROFILE

ROAD CHOICE PART NUMBER	DESCRIPTION	DIMENSIONS	LBS EACH
MF122424R	Heavy-duty rubber mud flap with a 20" x 20" insert and a anti-spray dot backing	24" x 24"	7.8 lbs.
MF122430R		24" x 30"	10.0 lbs.
MF122436R		24" x 36"	12.2 lbs.



Chevron



Heavy-Duty



Optional Dot Anti-Spray