


AIR DISC BRAKES



ROAD CHOICE



We are committed to keeping
trucks on the road and moving
forward by providing quality parts
to all who repair heavy-duty vehicles.

CONFIDENCE.
COVERAGE.
COMMITMENT.

TABLE OF CONTENTS

AIR DISC BRAKES 4

Calipers 5

Pads 7

Rotors 9

Hardware Kits 10

Technical Guide 11



**Parts that keep you moving.
Quality that keeps you coming back.**

AIR DISC BRAKES

ADVANTAGES OF AIR DISC BRAKES

Air disc brakes offer an alternative design compared to drum brakes, meeting the demanding challenges and performance standards faced by heavy-duty tractors, trucks and trailers. They are quickly becoming standard equipment for most Class 8 trucks, including trailer, transit, refuse and line haul. Because of their improved safety, performance and Total Cost of Ownership, ADB provides the total package.

VALUE

Due to the greater longevity of ADB components vs. drum brake, vehicles equipped with ADB can offer maintenance related savings of up to 30% for the lifetime of their vehicle. It's also important to note that the Road Choice ADB line is **backed by a one-year warranty**.

INCREASED UPTIME

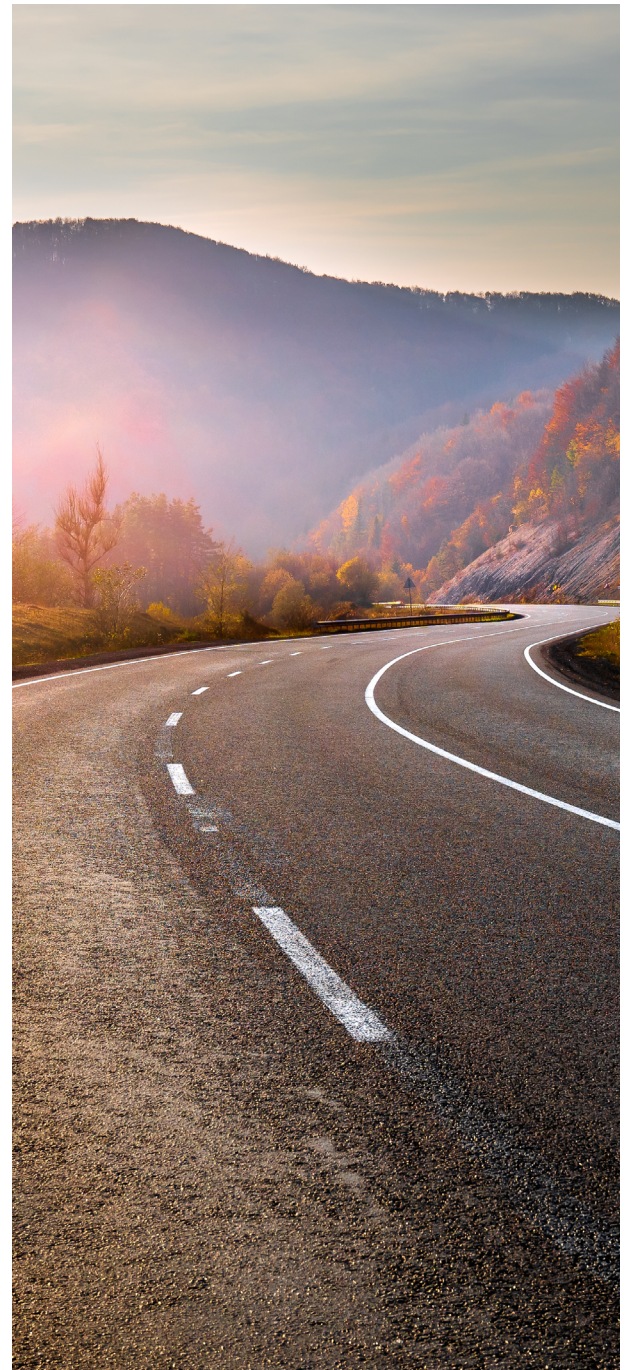
Replacement cycles for wearable components in an ADB system are longer compared to drum brakes. It's not uncommon to see pads and rotors on line haul applications last for 500k miles or more. On average it only takes 15 minutes to replace a set of disc pads, which is significant time saved compared to replacing a set of brake shoes.

SUPERIOR STOPPING POWER

ADB can help stop a vehicle 25-30 feet sooner than traditional drum brakes. They also meet FMVSS-121 reduced stopping distance (RSD) regulations.

HIGH PERFORMANCE

An ADB system disperses heat much better than a drum brake system. Because of the reduced heat accumulation in the wheel end, ADB offer a significant reduction in brake fade, which is a great feature for high-demand applications. They also provide even torque output at each wheel end, creating exceptional brake balance. Overall, drivers will notice that their vehicle feels much safer and controllable during a brake application, even in challenging conditions.



REMAN CALIPERS

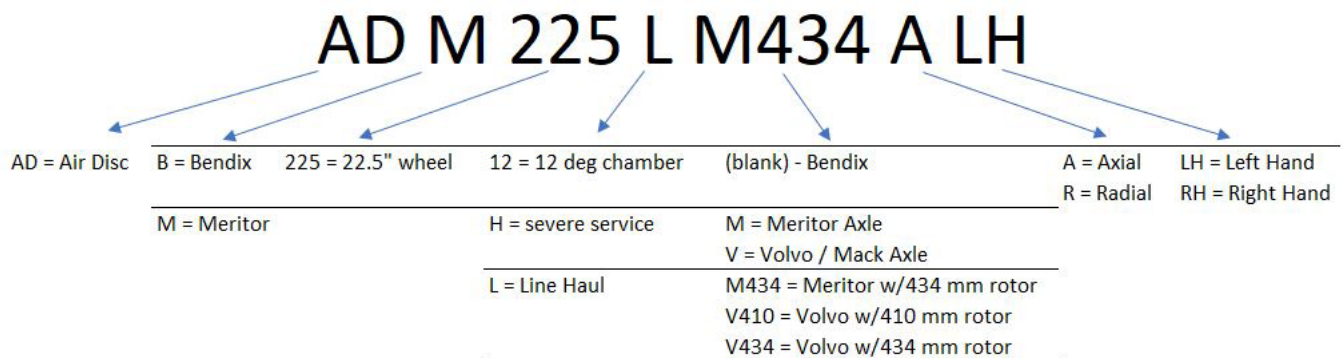
ROAD CHOICE® REMAN CALIPERS are manufactured in the USA with high quality replacement parts. All internal components are measured before they are reused and worn components are replaced with new. You can have confidence knowing that each caliper is tested at the end of the line to ensure proper function before it's shipped out.



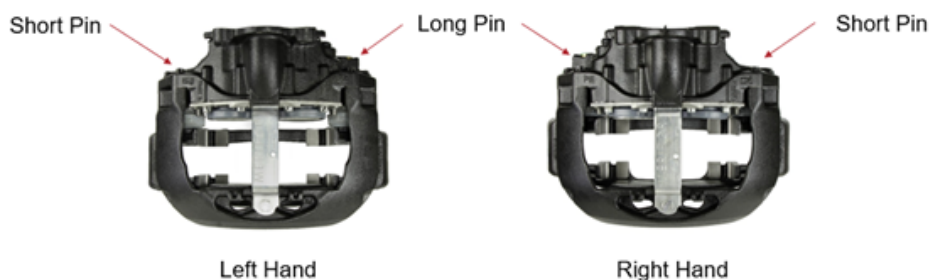
REMAN CALIPER PART NUMBER NOMENCLATURE

EXAMPLE: ADM225LM434ALH

BREAKDOWN:



HOW TO IDENTIFY A LEFT VERSUS RIGHT HAND CALIPER



- Stand where you would if a caliper is still on the vehicle
- Find the short pin
- If the short pin is in your left hand, it is a **left hand caliper**
- This is normally found on the driver (left) side of the vehicle

REMAN CALIPERS

PART NUMBER	PRIMARY APPLICATION	CROSS-REFERENCE		
		OEM	BENDIX	MERITOR
ADB22512RRH	Freightliner		K081256, K097846, K097846SC, K109957, K147136	
ADB22512RLH	Freightliner		K081257, K097847, K097847SC, K109958, K147135	
ADB22512ARH	Paccar, Volvo, Mack, Navistar		K081142, K097850, K097850SC, K109961, K147430	
ADB22512ALH	Paccar, Volvo, Mack, Navistar		K081143, K097851, K097851SC, K109962, K147429	
ADM225HMALH	Paccar, Autocar, Coach, Refuse			EX225H202XX000, EX225H202R
ADM225HMARH	Paccar, Autocar, Coach, Refuse			EX225H201XX000, EX225H201R
ADM225LV434ALH	Mack, Volvo	23675019, 23582848, 23582844		EX225L265XX000, EX225L235XX000
ADM225LV434ARH	Mack, Volvo	23675020, 23582850, 23582846		EX225L266XX000, EX225L236XX000
ADM225LM434ALH	Mack, Volvo	23675022, 23582864, 23582860		EX225L267XX000, EX225L237XX000
ADM225LM434ARH	Mack, Volvo	23675023, 23582866, 23582862		EX225L268XX000, EX225L238XX000
ADM225HVALH	Mack, Volvo	23675025, 22188310, 22188312		EX225H227XX101, EX225H217XX101
ADM225HVARH	Mack, Volvo	23675026, 22188311, 22188315		EX225H228XX101, EX225H218XX101
ADM225LM434RLH	Mack, Volvo	23675034, 23582876		EX225L269XX000, EX225L247XX000
ADM225LM434RRH	Mack, Volvo	23675035, 23582878		EX225L270XX000, EX225L248XX000
ADM225HVRLH	Mack, Volvo	23675133, 21906491		EX225H225XX101, EX225H215XX101
ADM225HVRRH	Mack, Volvo	23675134, 21906497		EX225H226XX101, EX225H216XX101

ADB PADS

ENGINEERED FOR VALUE AND HIGH TORQUE STOPPING POWER.

Road Choice serves many heavy-duty markets including trailer, transit, refuse and line haul. All brake pad kits include OE quality hardware.

STANDARDIZE WITH CONFIDENCE.

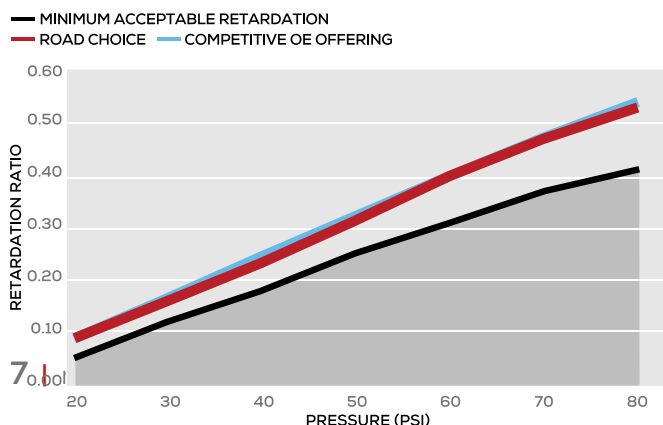
Road Choice all-makes air disc brake pads are 100% free of asbestos and manufactured with Level N material that meets the Level N 2025 standard (less than 0.5% copper by weight). This allows you to standardize on air disc pads with no need to change your friction brand down the road. That's confidence to put you ahead.



REDUCE STOPPING DISTANCE APPROVED THROUGH FMVSS 121 VALIDATION.

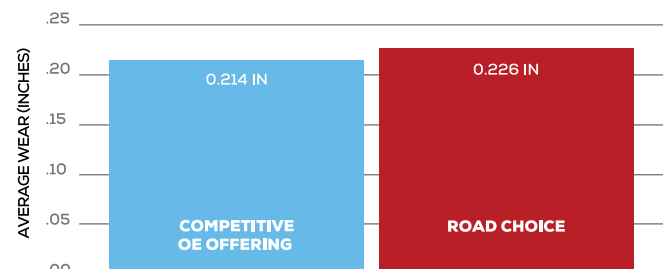
The brake retardation testing and wear testing charts below show how Road Choice air disc brake pad performance compares with competitor performance and industry standards. Road Choice performance was proven when tested using a standard 18" chamber (typical for line haul and trailer applications).

BRAKE RETARDATION PERFORMANCE



TOTAL PAD WEAR

SAE J21117 SECTION 7



ADB PADS

ROAD CHOICE® AIR DISC BRAKE PADS

- N-type, copper free pad kits give you OEM equivalent stopping performance.
- Each pad kit comes with replacement hardware.

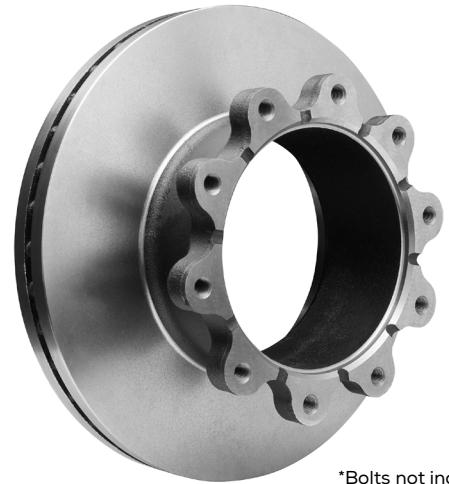


ROAD CHOICE PART NUMBER	APPLICATION	CROSS-REFERENCE				
		GENUINE	BENDIX	HENDRICKSON	MERITOR	WABCO
ADVBX1369	Bendix ADB22X		K070796, K109113 (Severe-Duty)	S-29152-2	MMD1369AG	
ADVME1370	Meritor EX+ L - 434 MM Rotor	KIT2252L2CG, KIT2252LCM7400			KIT2252L2CD2, KIT2252L2CG, KIT2252LCM7070	
ADVWB1777	Wabco Pan 22				MMD1777AG	
ADVWB2061	Maxxus				MMD2061AG	640 322 934 2
ADVME1708	Mack Refuse	KIT2252HVBP			KIT2252HBMA9500, KIT2252HBM7070, KIT2252HVBP	
ADVME1311	Meritor EX+ H Refuse	KIT2252H2DD			KIT2252H2BA2, KIT2252H2CG, KIT2252H2DD	
ADVME225L410	Meritor EX+ L - 410 MM Rotor	KIT2252LBM7400			KIT2252LBM7070, KIT2252LBM7400	
ADVWB1777M22T	Hendrickson Maxx 22T			S-35303-1	MMD1777M22TAG	640 222 927 2
ADVWB1518	Wabco Pan 17				MMD1518AG	12999703VT
ADVWB1438	Wabco Pan 19				MMD1438AG	12999737VT
ADVBX1203	Transit		5013257			

ADB ROTORS

ROAD CHOICE® AIR DISC BRAKE ROTORS

are designed for enhanced thermal properties to extend life and improve fade resistance. Lower temperatures during braking allow for longer friction life and improved rotor durability.



*Bolts not included.

PART NUMBER	PRIMARY APPLICATION	CROSS-REFERENCE			
		BENDIX	CONMET	HENDRICKSON	MERITOR
ADB150MMU	Line Haul, Refuse, Trailer	802082, K038574			
ADB138MMU	Line Haul, Refuse, Trailer	802081, K038573			
ADBK131MMU	Transit/Vocational	K021958			
ADB045MMS	Truck	802569			
ADC160MMU	Truck, Trailer		10020682		
ADC053MMF	Trailer		10085621		
ADS34172006	Trailer			S-34172	
AD642098	Transit/Vocational				23123642002
AD647098	Transit/Vocational				23123647002

ADB HARDWARE KITS

ROAD CHOICE® AIR DISC BRAKE HARDWARE KITS are useful in the event that small repairs are need. Our hardware kits are perfect for minor caliper repairs or for the replacement of bushings and rubber boots. It's important that small damages, like tears, are caught early before they cause lasting damage. Proper inspection of Air Disc Brake parts, leading to early repair with hardware kits, can save a fleet hundreds of dollars.

PART NUMBER	DESCRIPTION	CROSS-REFERENCE	
		BENDIX	MERITOR
ADB22XNUT	Adjuster shear nut	802455	MCKSK.2.8
ADB22XBUSHING	Tappet bushing kit	092079	MCKSK.4.2
ADB22XPINKIT	Slide pin/bushing kit	803114	MCKSK.6.2
ADB22XGREASE	Slide pin grease	021964	68966091Z
ADB22XADJCOVER	Adjuster cover	802643	CS1142



TECHNICAL GUIDE

TECHNICAL GUIDE SPECIFIC TO LINE HAUL AND REFUSE

Regular inspection and maintenance of ADB components is a critical part of vehicle maintenance. We recommend completing a wheels on inspection at least 4 times between pad changes – once every 4-6 months.

The chart below shows recommended maintenance practices in addition to all standard industry practices (including daily pre-trip inspections). It also provides information on conducting visual checks of the condition of the brake pad/rotor wear without removing the wheels.

Make sure that you always refer to your vehicle's maintenance manual for OEM specifications. We recommend documenting normal wear to your system during maintenance inspections. This will help better assist you in determining the ideal maintenance interval for your vehicle.

INSPECTION PERIOD	Line Haul Application Every Four Months	Severe Duty/ Heavy Haul Every Three Months	At Each Preventative Maintenance Inspection:
INSPECTIONS WITH THE WHEEL MOUNTED			
Check the wear indicator to determine if a wheels-off inspection is required.	✓	✓	✓
Ensure that pad and rotor clearance is within OEM specifications.	✓	✓	✓
Inspect rotors for any visible cracks or damage.	✓	✓	✓
Inspect caliper bolts and chamber nuts to ensure they are tightened.	✓	✓	✓
Check to ensure adjuster cap and slide pin caps are in place.	✓	✓	✓
INSPECTIONS WITH THE WHEEL REMOVED			
Inspect rotors and pads for any visible cracks or damage.			✓
Remove pads and measure for wear side to side. Check pad abutments for signs of wear.			✓
Ensure that pad and rotor clearance is within OEM specifications. Check slide pin and tappet boots to make sure they are not melted or torn.			✓
Ensure that the caliper travels freely and smoothly.			✓
Ensure that pad adjuster cover and piston boots are free of damage and fully engaged.			✓
Visually inspect the entire ADB unit for signs of damage.			✓



ROAD CHOICE

© 2024 Road Choice® – All Rights Reserved.
RCOADB-24CAT-050224